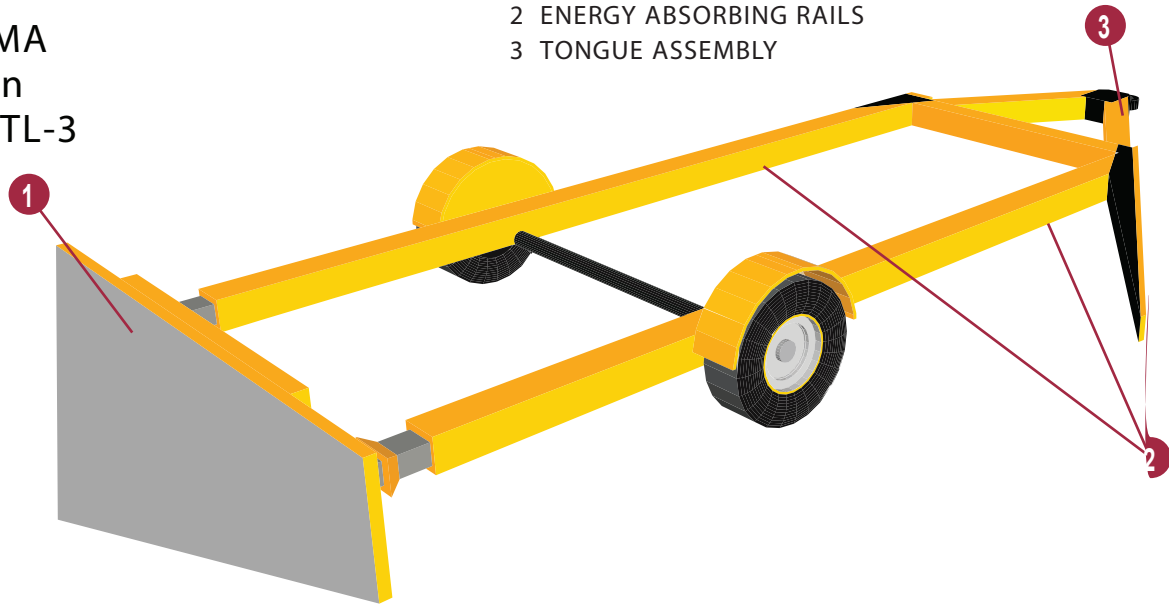


TTMA 100

Trailer Truck Mounted Attenuator

- Low Cost Trailer TMA
- Lightweight Design
- Meets NCHRP 350 TL-3

- 1 IMPACT HEAD
- 2 ENERGY ABSORBING RAILS
- 3 TONGUE ASSEMBLY



FEATURES

- Tube bursting technology utilizes the trailer frame as the energy absorber thus simplifying the design and reducing cost.
- Meets all required and optional NCHRP 350 TL-3 test criteria with the support vehicle blocked during the light car head on impact to eliminate all forward movement (worse case scenario).
- Provides continuous protection at all times and speeds; no need to raise TMA to vertical position for transport; no overhead clearance issues.
- Can be used with any support vehicle of 4535 kg [10,000 lb] GVW or more equipped with a standard 8 ton pintle hook.
- No maximum support vehicle weight limit.
- No need for dedicated support vehicle; change support vehicle in minutes.
- Fully galvanized for long-term moisture and corrosion protection; built to last.
- Can be attached directly to snow-plowing, and some sanding and salting equipment.
- Can be equipped with arrow board or variable message sign panels (optional).
- Field replacement components for low-cost in-field repair of nuisance hits.
- Tongue weight of only 90 kg [200 lb] does not significantly reduce the load carrying capacity of the support vehicle.

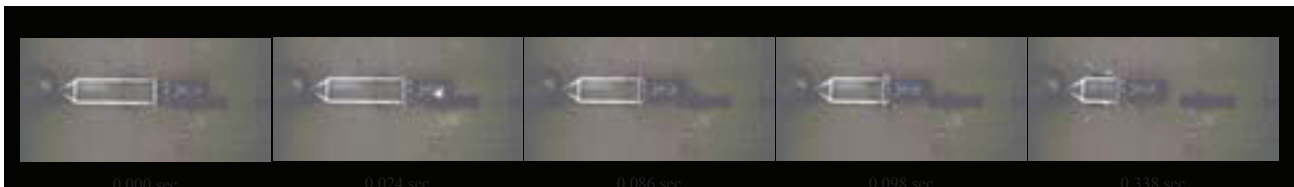
NCHRP 350 TL-3 TRAILER PROTECTION IN AN AFFORDABLE DESIGN

Barrier Systems, Inc, innovative, flexible and affordable trailer truck mounted attenuator (TMA), TTMA-100, is the first approved hitch-mounted TL-3 TMA that can be used with almost any vehicle in your fleet from 4535 kg [10,000 lb] to unlimited GVW. Utilizing a standard 8-ton pintle hitch, the 658 kg [1450 lb] TTMA-100 can be attached to the towing vehicle in a few minutes with absolutely no modification. The TTMA-100 offers the most affordable and flexible TMA safety on the market today.



PHYSICAL SPECIFICATIONS

Length	7.2 m [23' 6"]
Width	244 cm [96"]
Height	790 mm [31"]
Weight	658 kg [1450 lb]
Test Performance Level	NCHRP 350 TL-3



FREQUENTLY ASKED QUESTIONS

CAN THE TTMA 100 WITHSTAND NUISANCE IMPACTS?

Yes, the TTMA 100 can withstand an impact up to 8 km/h (5 mph) by a vehicle weighing up to 2000 kg [4450 lb] without impeding crash performance.

CAN THE TTMA 100 MEET NCHRP 350 TL-3 OPTIONAL TESTS?

Yes, the TTMA 100 meets all required test criteria for mandatory and optional tests under NCHRP report 350 TL-3.

DOES THE TTMA 100 MEET THE NCHRP 350 INFINITE WEIGHT TEST?

Yes the TTMA 100 Meets the NCHRP 350 infinite weight test (2000 kg (4450 pound) Pickup Truck impacting at 100 km/h (62.5 mph) with the host vehicle up against a concrete wall to simulate the heaviest possible work vehicle in a construction zone.)

HOW DOES THE TTMA 100 ATTACH TO A TRUCK?

The TTMA utilizes a standard 8 ton pintle hook. There is no need to make any modifications to the host vehicle when using the TTMA100.